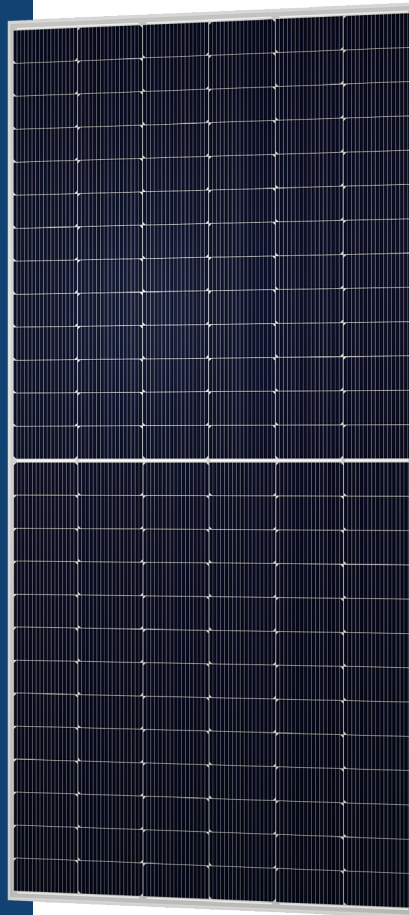


# DAX 156 TC

Monofacial Module N-Type TOPCON

**625-635W**  
Power

**22,72%**  
Maximum Efficiency



## HIGHER POWER OUTPUT

Highest Performance and efficiency on the market



## TECHNOLOGY

N-Type TOPCON



## MECHANICAL LOAD

5400 Pa Front / 2400 Pa Back



## FIRE CLASS

Class 1 UNI 9177



## ENVIRONMENT CONDITION

Resistant to harsh environments



## POWER CLASS

0+4,99 Watt Positive Tolerance



## WARRANTY

20 years product warranty  
30 years linear power output warranty

**20** YEARS  
PRODUCT  
WARRANTY

**30** YEARS  
LINEAR  
POWER  
OUTPUT  
WARRANTY

### Certifications

IEC 61215:2021 - IEC 61730:2023

ISO 9001:2015 - ISO 14001:2015 - ISO 45001:2018



IEC 62716  
AMMONIA  
RESISTANCE



IEC 60068  
DUST AND  
SAND



IEC 62804  
PID



IEC 61701  
SALT MIST



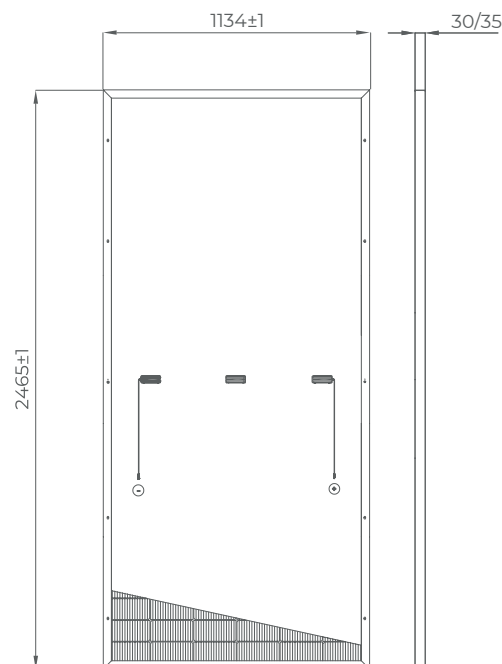
[daxsolar.it/en](https://daxsolar.it/en)

|   | DAX 156 TC10 625 |       | DAX 156 TC10 630 |       | DAX 156 TC10 635 |       |
|---|------------------|-------|------------------|-------|------------------|-------|
|   | STC              | NMOT  | STC              | NMOT  | STC              | NMOT  |
| <b>Maximum power</b> - $W_p$ [W]            | 625              | 504   | 630              | 508   | 635              | 512   |
| <b>Maximum power voltage</b> - $V_{mp}$ [V] | 48,28            | 45,98 | 48,47            | 46,16 | 48,63            | 46,31 |
| <b>Maximum power current</b> - $I_{mp}$ [A] | 12,95            | 10,79 | 13,00            | 10,83 | 13,06            | 10,88 |
| <b>Open circuit voltage</b> - $V_{oc}$ [V]  | 56,22            | 53,54 | 56,38            | 53,70 | 56,54            | 53,85 |
| <b>Short circuit current</b> - $I_{sc}$ [A] | 13,54            | 11,28 | 13,58            | 11,32 | 13,63            | 11,36 |
| <b>Module efficiency</b> - [%]              | 22,36            |       | 22,54            |       | 22,72            |       |
| <b>Power class</b> - [W]                    | -0 + 4,99        |       |                  |       |                  |       |
| <b>Maximum system voltage</b> - [V]         | 1500 DC          |       |                  |       |                  |       |
| <b>Maximum series fuse rating</b> - [A]     | 30               |       |                  |       |                  |       |

STC VALUE: 1000 W/m<sup>2</sup>, AM 1.5, temperature 25 °C. | NMOT: 800 W/m<sup>2</sup>, AM 1.5, temperature 20 °C, wind speed 1 m/s, tolerance +/-3 %

| Mechanical parameter          |  |
|-------------------------------|--|
| <b>Module dimension</b>       | 2465 x 1134 x 30 (35*) mm                                  |
| <b>Weight</b>                 | 29 kg  |
| <b>Solar cells technology</b> | N-Type TOPCON M10  |
| <b>No. of cells</b>           | 156 half cut   |
| <b>Glass</b>                  | 32 mm High Transmission, AR Coated Heat Strengthened Glass |
| <b>Frame</b>                  | Anodized Aluminium Alloy                                   |
| <b>Junction box</b>           | IP68 3 bypass diodes                                       |
| <b>Connector</b>              | MC4 or compatible  |
| <b>Output cable length</b>    | 1000 mm**  |
| <b>Cable size</b>             | 4 mm <sup>2</sup>  |
| <b>Mechanical load</b>        | 5400 / 2400 Pa   |
| <b>Safety class</b>           | Class II   |

\*On Request | \*\*Customizable on request



| Temperature coefficient                           |              |
|---|--------------|
| <b>Temperature coefficient at P<sub>Max</sub></b> | -0,30 %/°C   |
| <b>Temperature coefficient at V<sub>oc</sub></b>  | -0,25 %/°C   |
| <b>Temperature coefficient at I<sub>sc</sub></b>  | +0,045 %/°C  |
| <b>Operational Temperature</b>                    | -40 / +85 °C |
| <b>NMOT</b>                                       | 44 ±2 °C     |

| Packaging configuration     |                       |
|-----------------------------|-----------------------|
| <b>Pallet dimension</b>     | 2480 x 1140 x 1200 mm |
| <b>Pallet weight</b>        | 1060 kg               |
| <b>Pcs per pallet</b>       | 36 pz                 |
| <b>Pallet per truck</b>     | 20 pz                 |
| <b>Pallet per container</b> | 18 pz                 |

Please read the product assembly and safety manual before installation. Specifications in this data sheet are subject to change without notice.

#### DAX Solar S.r.l.

**Legal Headquarters**  
V.le Bianca Maria, 24  
20129 Milano (MI) - IT

**Administrative Headquarters**  
Via Archimede, 45/47  
20864 Agrate Brianza (MB) - IT  
T +39 039 9468591

**Production Headquarters**  
Via Salaria per L'Aquila, 34  
02015 Cittaducale (RI) - IT  
T +39 0746 1766636

**DAX SOLAR**

info@daxsolar.it [daxsolar.it/en](http://daxsolar.it/en)