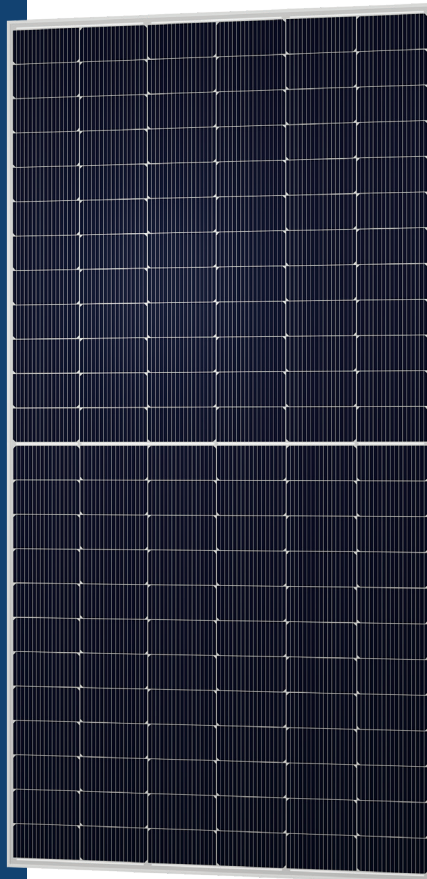


# DAX 144 TC

Monofacial Module N-Type TOPCON

**580-590W**  
Power

**22,84%**  
Maximum Efficiency



## HIGHER POWER OUTPUT

Highest Performance and efficiency on the market



## TECHNOLOGY

N-Type TOPCON



## MECHANICAL LOAD

5400 Pa Front / 2400 Pa Back



## FIRE CLASS

Class 1 UNI 9177



## ENVIRONMENT CONDITION

Resistant to harsh environments



## POWER CLASS

0+4,99 Watt Positive Tolerance



## WARRANTY

20 years product warranty  
30 years linear power output warranty

**20** YEARS  
PRODUCT  
WARRANTY

**30** YEARS  
LINEAR  
POWER  
OUTPUT  
WARRANTY

### Certifications

IEC 61215:2021 - IEC 61730:2023

ISO 9001:2015 - ISO 14001:2015 - ISO 45001:2018



IEC 62716  
AMMONIA  
RESISTANCE



IEC 60068  
DUST AND  
SAND



IEC 62804  
PID



IEC 61701  
SALT MIST



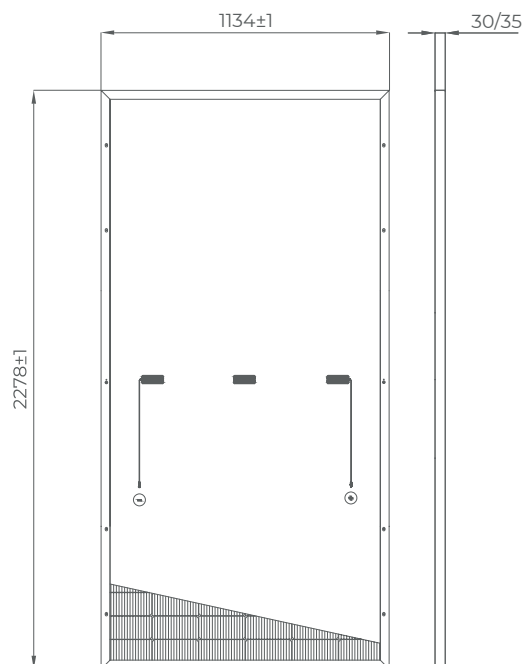
[daxsolar.it/en](https://daxsolar.it/en)

	DAX 144 TC10 580		DAX 144 TC10 585		DAX 144 TC10 590	
	STC	NMOT	STC	NMOT	STC	NMOT
<b>Maximum power</b> - $W_p$ [W]	580	468	585	472	590	476
<b>Maximum power voltage</b> - $V_{mp}$ [V]	43,52	41,45	43,83	41,74	44,07	41,97
<b>Maximum power current</b> - $I_{mp}$ [A]	13,33	11,11	13,35	11,13	13,39	11,16
<b>Open circuit voltage</b> - $V_{oc}$ [V]	51,19	48,75	51,21	48,77	51,24	48,80
<b>Short circuit current</b> - $I_{sc}$ [A]	14,08	11,73	14,14	11,78	14,26	11,88
<b>Module efficiency</b> - [%]	22,45		22,65%		22,84	
<b>Power class</b> - [W]	-0 + 4,99					
<b>Maximum system voltage</b> - [V]	1500 DC					
<b>Maximum series fuse rating</b> - [A]	30					

STC VALUE: 1000 W/m<sup>2</sup>, AM 1.5, temperature 25 °C. | NMOT: 800 W/m<sup>2</sup>, AM 1.5, temperature 20 °C, wind speed 1 m/s, tolerance +/-3 %

Mechanical parameter	
<b>Module dimension</b>	2278 x 1134 x 30 (35*) mm
<b>Weight</b>	27 kg
<b>Solar cells technology</b>	N-Type TOPCON M10
<b>No. of cells</b>	144 half cut
<b>Glass</b>	32 mm High Transmission, AR Coated Heat Strengthened Glass
<b>Frame</b>	Anodized Aluminium Alloy
<b>Junction box</b>	IP68 3 bypass diodes
<b>Connector</b>	MC4 or compatible
<b>Output cable length</b>	1000 mm**
<b>Cable size</b>	4 mm <sup>2</sup>
<b>Mechanical load</b>	5400 / 2400 Pa
<b>Safety class</b>	Class II

\*On Request | \*\*Customizable on request



Temperature coefficient	
<b>Temperature coefficient at P<sub>Max</sub></b>	-0,30 %/°C
<b>Temperature coefficient at V<sub>oc</sub></b>	-0,25 %/°C
<b>Temperature coefficient at I<sub>sc</sub></b>	+0,045 %/°C
<b>Operational Temperature</b>	-40 / +85 °C
<b>NMOT</b>	44 ±2 °C

Packaging configuration	
<b>Pallet dimension</b>	2290 x 1140 x 1200 mm
<b>Pallet weight</b>	990 kg
<b>Pcs per pallet</b>	36 pz
<b>Pallet per truck</b>	22 pz
<b>Pallet per container</b>	20 pz

Please read the product assembly and safety manual before installation. Specifications in this data sheet are subject to change without notice.

#### DAX Solar S.r.l.

**Legal Headquarters**  
V.le Bianca Maria, 24  
20129 Milano (MI) - IT

**Administrative Headquarters**  
Via Archimede, 45/47  
20864 Agrate Brianza (MB) - IT  
T +39 039 9468591

**Production Headquarters**  
Via Salaria per L'Aquila, 34  
02015 Cittaducale (RI) - IT  
T +39 0746 1766636

**DAX SOLAR**

info@daxsolar.it daxsolar.it/en